

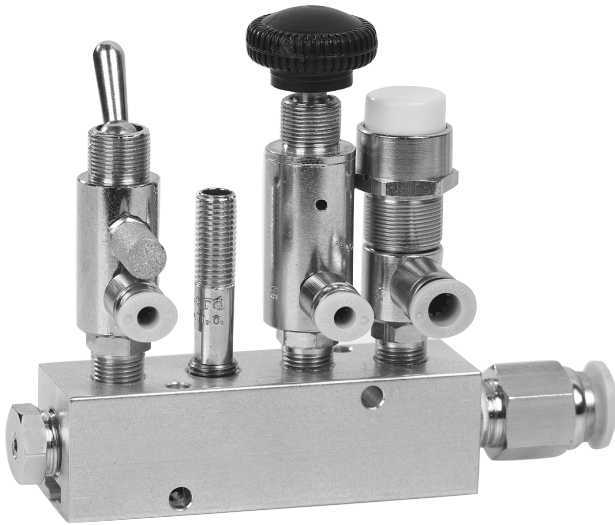
In-Line Manifolds

Clippard's aluminum pipe thread manifolds are an economical and efficient choice for grouping pneumatic valves and other components in applications where space is limited. In addition, manifolds help to reduce potential leak points and allow for faster installation, all with one common air supply and less piping.

A unique feature of this series of manifolds is a bottom T-slot mounting system which allows for secure mounting using only two carriage bolts on any center distance along the length of the manifold. Hardware Kit ordered separately.

Units are available with 4, 6, 8 and 10 stations.

- Medium:** Air or liquid
- Outlet Ports (Top Ports):** 1/8" NPT or 1/4" NPT
- Inlet Ports (End Ports):** 1/4" NPT or 3/8" NPT
- Mounting:** Top-to-bottom and front-to-back mounting holes as well as bottom T-slot mounting system
- Materials:** Clear Anodized Aluminum

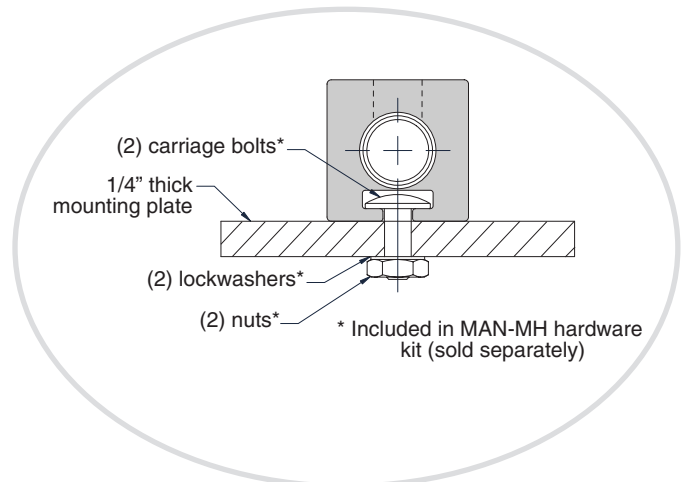


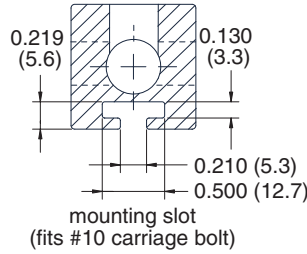
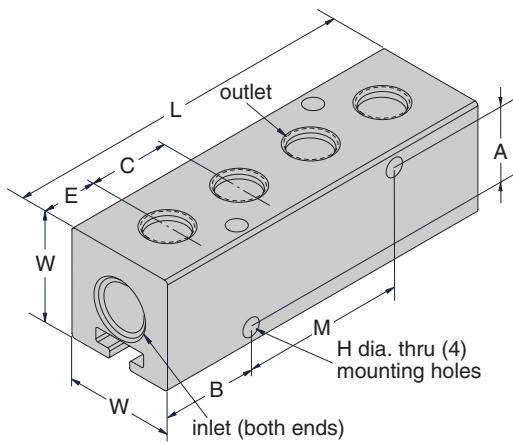
Uniquely mounts pipe thread versions of Clippard valves



A complete line of Clippard Push-Quick Fittings are available which may be assembled to manifolds as shown. Sizes include 1/8" NPT through 3/8" NPT which fit tubing from 1/8" OD to 1/2" OD.

Bottom T-Slot Mounting





Single outlet port shown. Multiple ports on alternate faces possible. Consult factory for availability and quote.

Part No.	Stations **	Width "W"	End Inlets	Top Outlets	Center "C" **	End "E"	Length "L"	Mtg. "M"	"A"	"B"	Hole* "H"
MAN-ASF1-04	4						3.250"	1.500"			
MAN-ASF1-06	6	1"	1/4" NPT	1/8" NPT	0.750"	0.500"	4.750"	3.000"	0.875"	0.875"	0.172"
MAN-ASF1-08	8	Sq.					6.250"	4.500"			(#8 screw)
MAN-ASF1-10	10						7.750"	6.000"			
MAN-ALF1-04	4						3.250"	1.500"			
MAN-ALF1-06	6	1 1/4"	3/8" NPT	1/8" NPT	0.750"	0.500"	4.750"	3.000"	0.875"	0.875"	0.201"
MAN-ALF1-08	8	Sq.					6.250"	4.500"			(#10 screw)
MAN-ALF1-10	10						7.750"	6.000"			
MAN-ALF2-04	4						4.125"	1.750"			
MAN-ALF2-06	6	1 1/4"	3/8" NPT	1/8" NPT	0.875"	0.750"	5.875"	3.500"	0.875"	1.187"	0.201"
MAN-ALF2-08	8	Sq.					7.625"	5.250"			(#10 screw)
MAN-ALF2-10	10						9.375"	7.000"			
MAN-ALY2-04	4						3.875"	1.750"			
MAN-ALY2-06	6	1 1/4"	3/8" NPT	1/4" NPT	0.875"	0.625"	5.625"	3.500"	0.875"	1.062"	0.201"
MAN-ALY2-08	8	Sq.					7.375"	5.250"			(#10 screw)
MAN-ALY2-10	10						9.125"	7.000"			
MAN-ALY6-04	4						5.875"	2.750"			
MAN-ALY6-06	6	1 1/4"	3/8" NPT	1/4" NPT	1.375"	0.875"	8.625"	5.500"	0.875"	1.562"	0.201"
MAN-ALY6-08	8	Sq.					11.375"	6.250"			(#10 screw)
MAN-ALY6-10	10						14.125"	11.000"			

* 0.172" can be tapped by the user for #10-32 thread; 0.201" may be tapped by user for 1/4"-20 thread for mounting.

** Variations available—consult factory.

Disclaimer & Limited Warranty

All information contained in this publication is for reference only. Proper design engineering procedures should be used to assure any compliances. Clippard Instrument Laboratory, Inc. reserves the right to make changes without notice and does not warrant or guarantee the information contained herein.

Limited Warranty. Clippard Instrument Laboratory, Inc. (seller) warrants its products to be free from defects in material and workmanship for a period of one (1) year from the date of sale. Seller's liability shall be limited at seller's option to repair, replace or refund the purchase price of product found by seller's examination to be defective. All claims under this warranty must be made in writing to seller's factory sales department giving full details, prior to return of product, postpaid, to factory. Seller shall not be responsible for product failure due to normal wear, accident, buyer's misapplication, abuse, neglect or alteration of product. Seller will not be responsible for any consequential damages. Clippard Instrument Laboratory, Inc. makes no other warranty of any kind, expressed or implied. All technical data and operations are average values based on standard production models. Some deviations can be expected and consideration should be given during initial design stages. All operating characteristics are based on new equipment, under normal conditions of use and environments, and a clean air supply.

Distributed By:



Clippard Instrument Laboratory, Inc.
7390 Colerain Avenue • Cincinnati, OH 45239
513-521-4261 • Fax 513-521-4464 • www.clippard.com